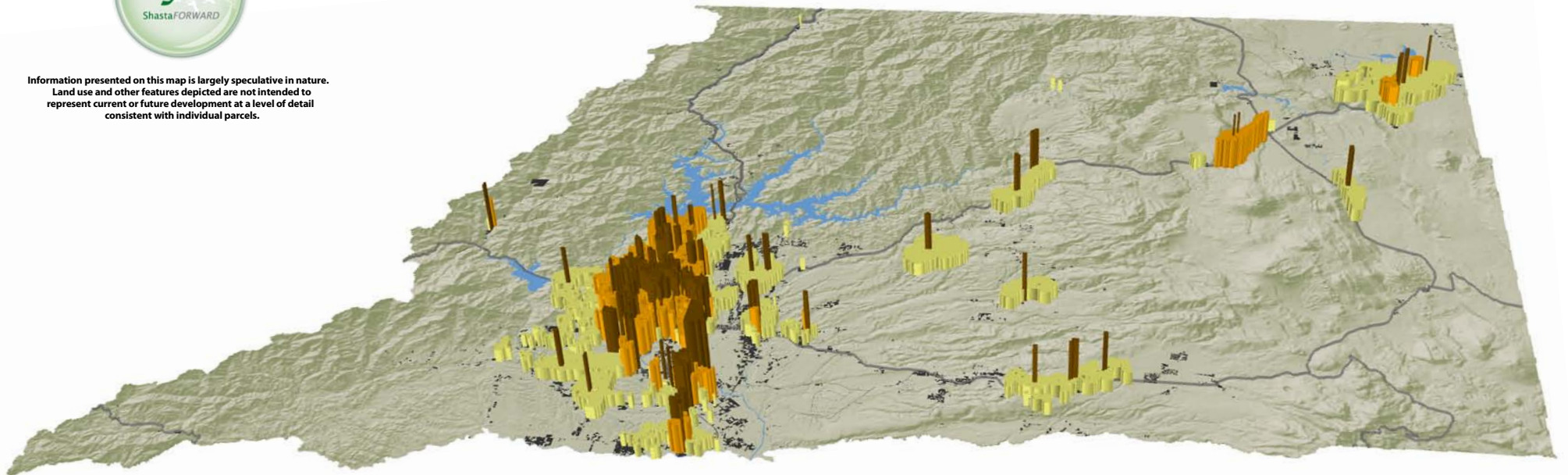


# Shasta County Alternative C Scenario 2050

(Estimated Population 331,724)



Information presented on this map is largely speculative in nature. Land use and other features depicted are not intended to represent current or future development at a level of detail consistent with individual parcels.



23% neighborhood

7% urban

70% large lot  
development

Existing Development



**VESTRA**  
Prepared by VESTRA Resources, Inc., Redding, CA  
August 2009