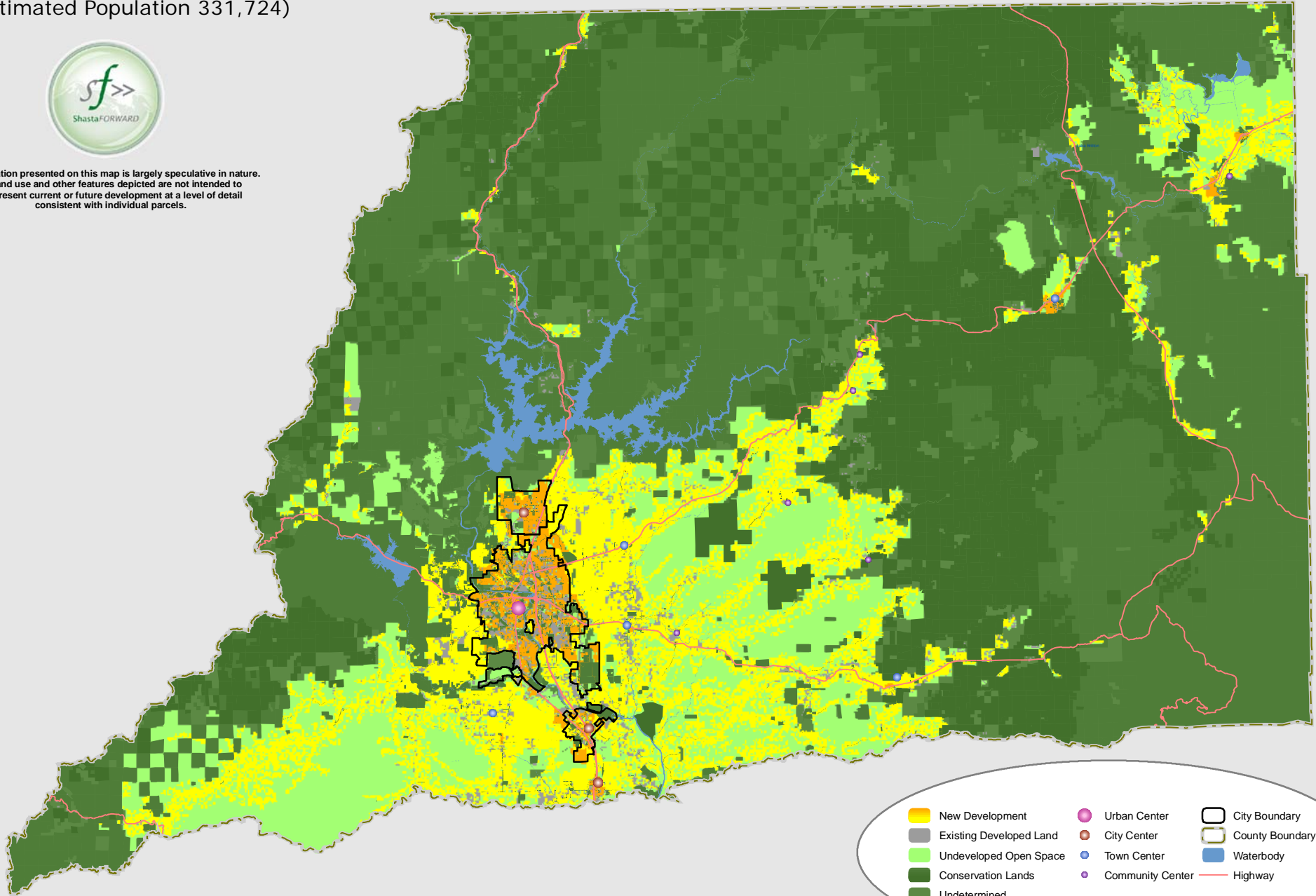


# Shasta County Current Trend Scenario 2050

(Estimated Population 331,724)



Information presented on this map is largely speculative in nature. Land use and other features depicted are not intended to represent current or future development at a level of detail consistent with individual parcels.



New Development	Urban Center	City Boundary
Existing Developed Land	City Center	County Boundary
Undeveloped Open Space	Town Center	Waterbody
Conservation Lands	Community Center	Highway
Undetermined		

