

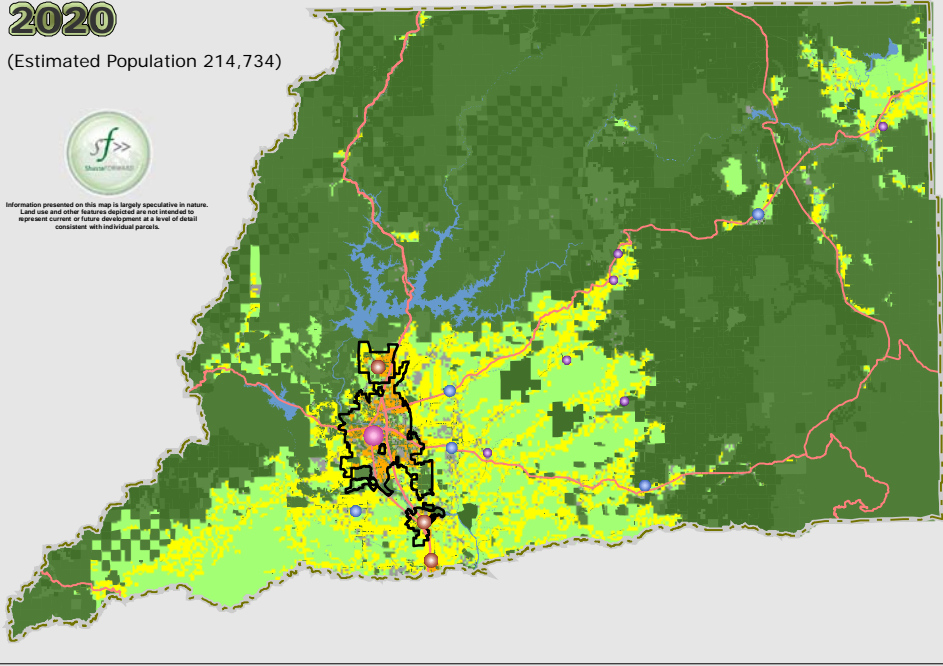
Shasta County Current Trend Scenario 2020 - 2050 Series

2020

(Estimated Population 214,734)

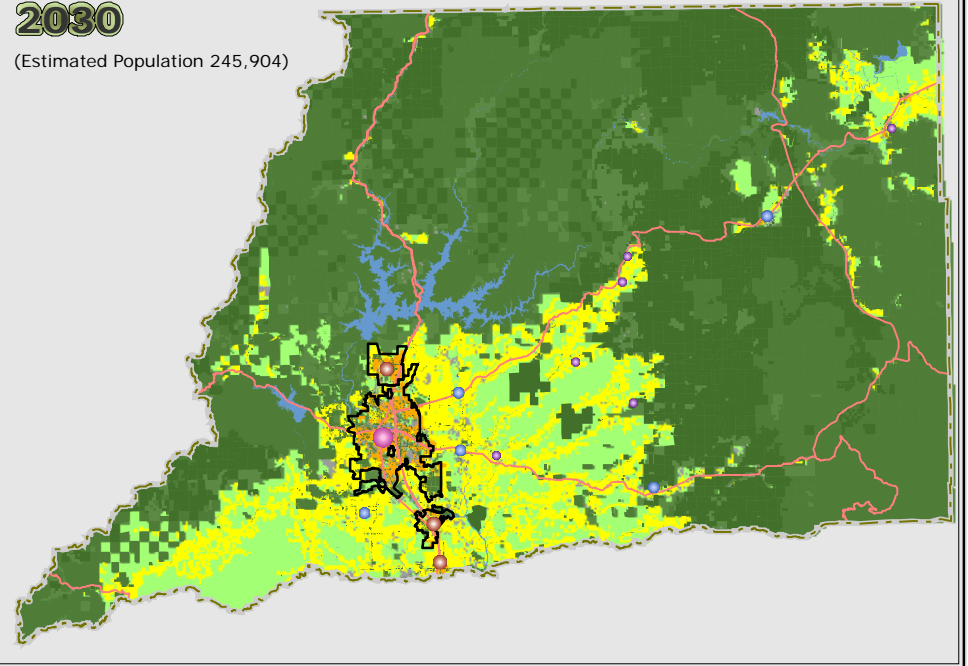


Information presented on this map is largely speculative in nature. Land use and other features depicted are not intended to represent current or future development at a level of detail consistent with individual parcels.



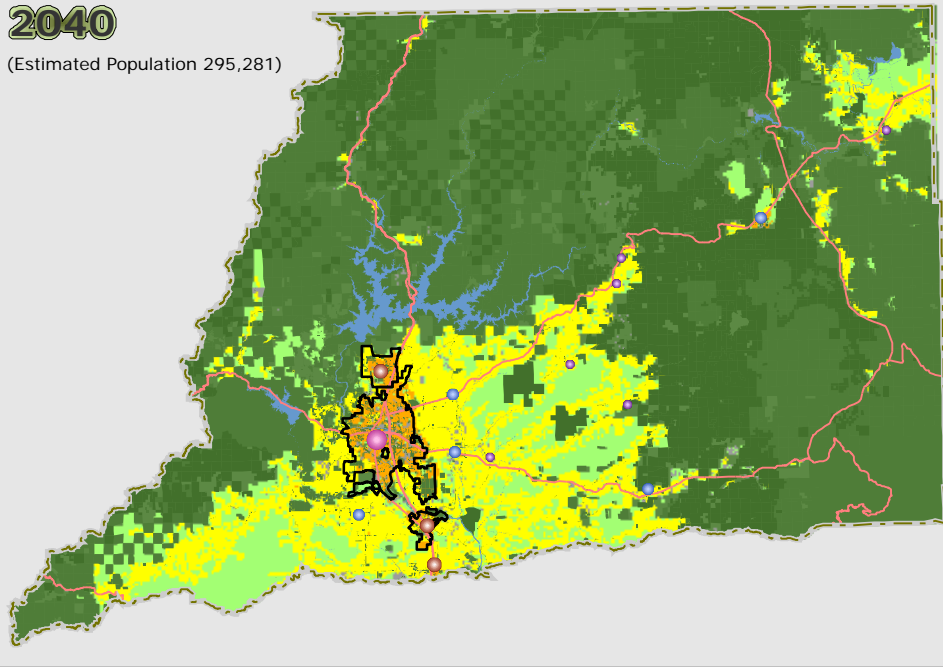
2030

(Estimated Population 245,904)



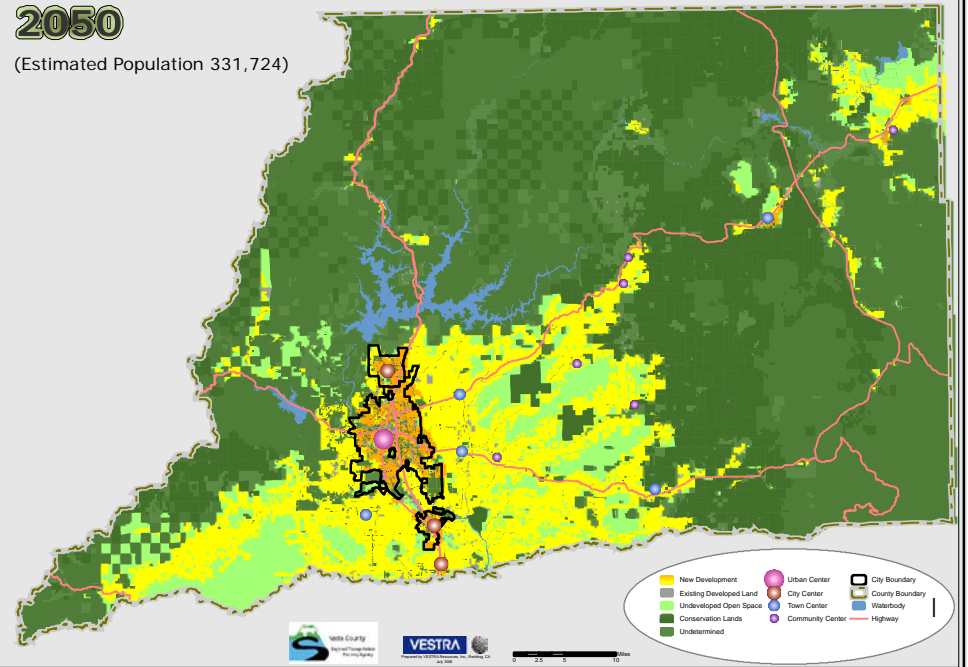
2040

(Estimated Population 295,281)



2050

(Estimated Population 331,724)



- New Development
- Existing Developed Land
- Undeveloped Open Space
- Conservation Lands
- Undetermined
- Urban Center
- City Center
- Town Center
- Community Center
- City Boundary
- County Boundary
- Waterbody
- Highway

