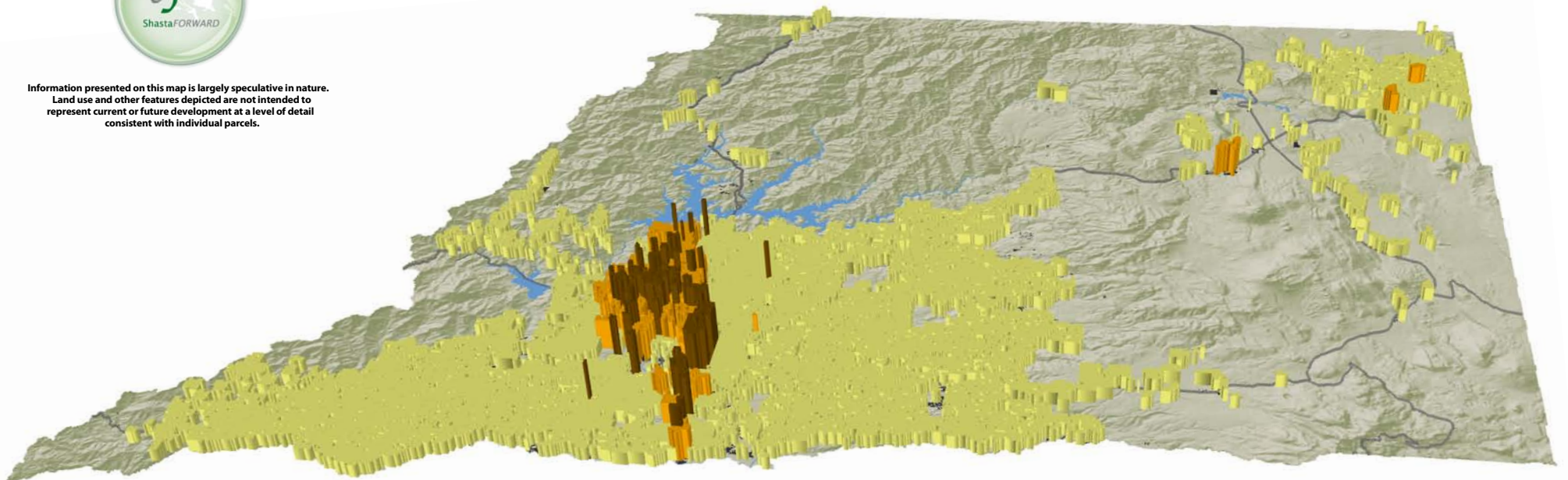


Shasta County Alternative A Scenario 2050

(Estimated Population 331,724)



Information presented on this map is largely speculative in nature. Land use and other features depicted are not intended to represent current or future development at a level of detail consistent with individual parcels.



3% neighborhood

1% urban

96% large lot
development

Existing Development



VESTRA
Prepared by VESTRA Resources, Inc., Redding, CA
August 2009